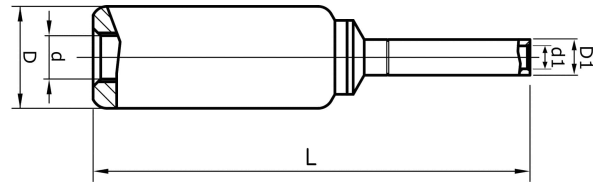


Through connectors of aluminium 16 - 95 mm² to
solid copper 10 mm²

AKS70-10S



- ✓ Transition joints from stranded Al conductors to solid Cu conductors 10 mm² (e.g. Excel, Excelett).
- ✓ Two crimps are needed for both Al and Cu.

AlCu through connector, from Al conductor to Cu conductor for stranded Al cable 70 mm², or for solid Al cable 95 mm², to solid Cu cable 10 mm². When hexagonal crimping Cu conductors, the dies are placed in the middle between the marking groove and the outer edge. Used with Elpress certified systems V1300, V250.



Item number: **7333-407400**

EAN: **7393487020672**

s1 (mm): **33**

d (mm): **11.3**

D (mm): **20**

L (mm): **86**

d1 (mm): **4.5**

D1 (mm): **7**

s (mm) - strip length: **45**

AWG/MCM Stranded Al: **2/0 AWG**

AWG/MCM Solid Al: **40**

AWG/MCM Cu: **8 AWG**

mm² Stranded Al: **70**

mm² Solid Al: **95**

mm² Cu: **10**