

Aluminium-copper through connectors 16 - 500
mm²

AKS500A- 300A



Item number: **7333-441400**

EAN: **7393487079540**

s1 (mm): **47**

d (mm): **28**

D (mm): **52**

L (mm): **184**

d1 (mm): **24.5**

D1 (mm): **31.5**

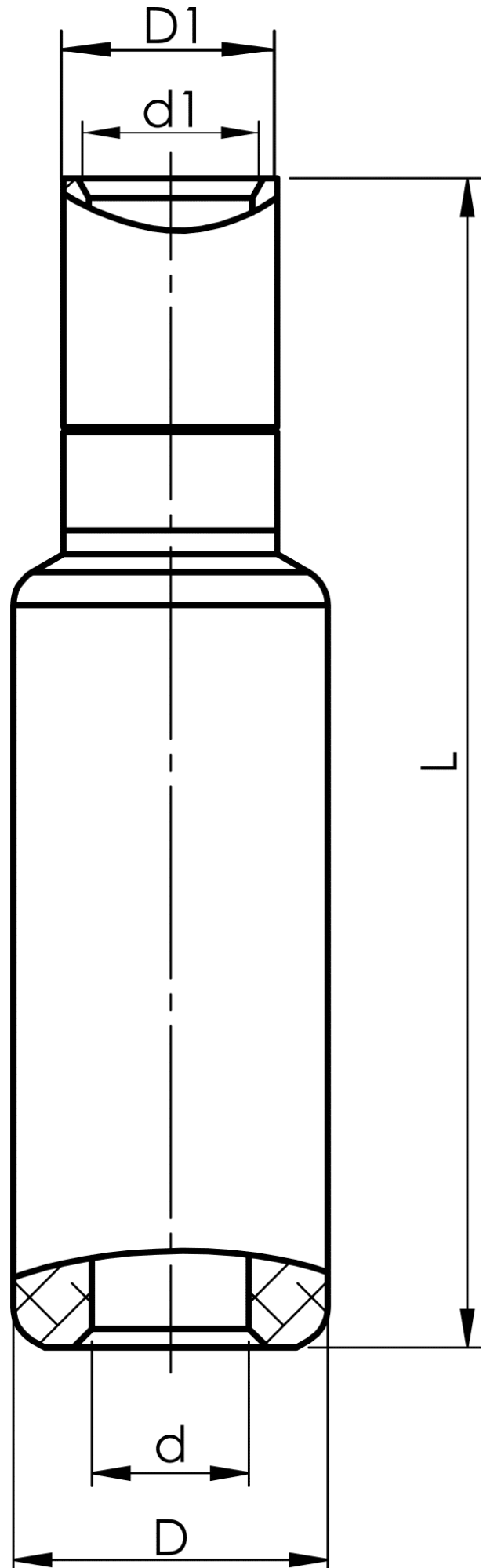
s (mm) - strip length: **110**

AWG/MCM Stranded Al: **950 MCM**

AWG/MCM Cu: **550 MCM**

mm² Stranded Al: **500**

mm² Cu: **300**



ELPRESS