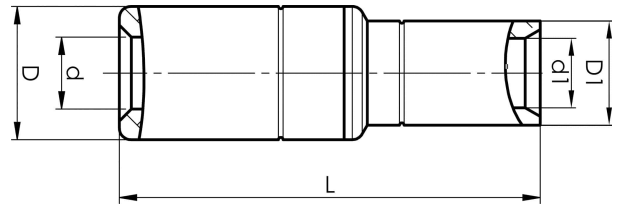


Aluminium-copper through connectors 16 - 500
mm²

AKS300- 240A



- ✓ Connector from Al conductor to Cu conductor.
- ✓ Stranded/solid Al conductors, stranded/multi-stranded Cu conductors.
- ✓ For multi-stranded Cu conductors, contact crimping using the Dual system is recommended.
- ✓ Two crimps are required for Al, normally one for Cu.

AlCu through connector, from Al conductor to Cu conductor. For stranded Al cable 300 mm² to the stranded/multi-stranded Cu cable 240 mm². When crimping the Cu section, place the dies between the mark on the sleeve and the edge of the Cu section. Used with Elpress certified system V250.



Item number: **7333-403600**
EAN: **7393487010031**

s1 (mm): **30**
d (mm): **22**
D (mm): **36**
L (mm): **123.5**
d1 (mm): **22.5**
D1 (mm): **29**
s (mm) - strip length: **83**

AWG/MCM Stranded Al: **550 MCM**
AWG/MCM Cu: **450 MCM**
mm² Stranded Al: **300**
mm² Cu: **240**