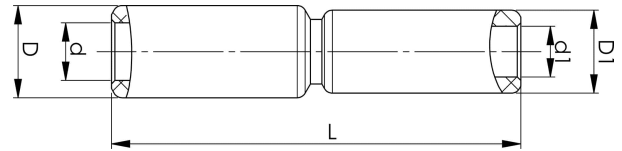


Through connectors with aluminium partitions with different areas 16 - 400 mm²

AS185-95

Al through connector with partition for stranded Al cable 185-95 mm², or for solid Al cable 240-120 mm². Used for splicing Al conductors of different areas. Used with Elpress certified systems V1300, V250.



Item number: **7313-409500**

EAN: **7393487009288**

s1 (mm): **60**

d (mm): **17.6**

D (mm): **32**

L (mm): **131.9**

d1 (mm): **12.5**

D1 (mm): **25**

s (mm) - strip length: **61**

AWG/MCM Stranded Al: **3/0 AWG - 350 MCM**

AWG/MCM Solid Al: **500250**

mm² Stranded Al: **185-95**

mm² Solid Al: **240-120**