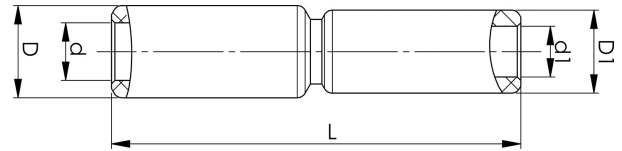


Through connectors with aluminium partitions with different areas 16 - 400 mm<sup>2</sup>



# AS150-70

Al through connector with partition for stranded Al cable 150-70 mm<sup>2</sup>, or for solid Al cable 185-95 mm<sup>2</sup>.  
Used for splicing Al conductors of different areas.  
Used with Elpress certified systems V1300, V250.



Item number: **7313-409100**

EAN: **7393487009257**

s1 (mm): **45**

d (mm): **15.8**

D (mm): **25**

L (mm): **116.1**

d1 (mm): **11.3**

D1 (mm): **20**

s (mm) - strip length: **60**

AWG/MCM Stranded Al: **2/0 AWG - 300 MCM**

AWG/MCM Solid Al: **35030**

mm<sup>2</sup> Stranded Al: **150-70**

mm<sup>2</sup> Solid Al: **185-95**