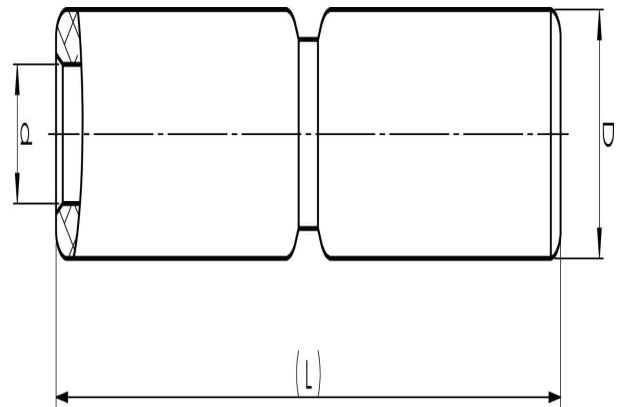
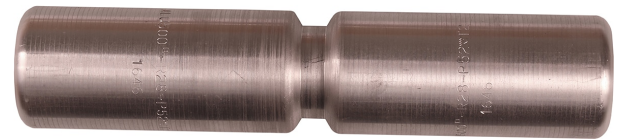


Aluminium through connectors with partition 16 -  
1200 mm<sup>2</sup>

# AS500A

- ✓ Used primarily for splicing two Al conductors with the same area.
- ✓ Two plus two crimps are needed.
- ✓ With partition.

Al through connector with partition for stranded Al cable 500 mm<sup>2</sup>. Used with Elpress certified system V250.



Item number: **7313-021300**

EAN: **7393487020023**

d (mm): **28**

D (mm): **52**

L (mm): **250**

s (mm) - strip length: **110**

AWG/MCM Stranded Al: **950 MCM**

mm<sup>2</sup> Stranded Al: **500**