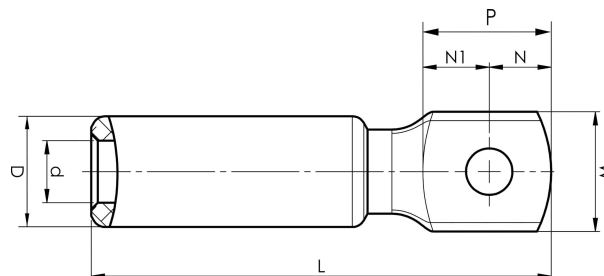


Aluminium terminals 16 - 1200 mm<sup>2</sup>

# AK25-6

- ✓ Used for connecting Al conductors to Al busbar.
- ✓ Two crimps are needed.



Al terminal for stranded Al cable 25 mm<sup>2</sup>, or for solid Al cable 35 mm<sup>2</sup> with an M6 hole in the palm. Used with Elpress certified systems V1300 or V250.



Item number: **7311-400600**

EAN: **7393487019812**

W (mm): **16**

N (mm): **8.5**

N1 (mm): **9**

P (mm): **17.5**

d (mm): **6.8**

D (mm): **13**

L (mm): **61**

t (mm) - palm thickness: **5**

s (mm) - strip length: **29**

Screw: **M6**

AWG/MCM Stranded Al: **4 AWG**

AWG/MCM Solid Al: **2 AWG**

mm<sup>2</sup> Stranded Al: **25**

mm<sup>2</sup> Solid Al: **35**