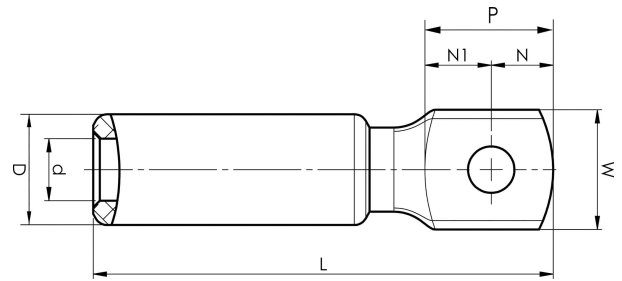


Aluminium terminals 16 - 1200 mm²

AK120-10

- ✓ Used for connecting Al conductors to Al busbar.
- ✓ Two crimps are needed.



Al terminal for stranded Al cable 120 mm², or for solid Al cable 150 mm² with an M10 hole in the palm. Used with Elpress certified systems V1300 or V250.



Item number: **7311-402600**

EAN: **7393487019843**

W (mm): **27**

N (mm): **14**

N1 (mm): **15**

P (mm): **29**

d (mm): **14**

D (mm): **25**

L (mm): **104**

t (mm) - palm thickness: **10.5**

s (mm) - strip length: **60**

Screw: **M10**

AWG/MCM Stranded Al: **4/0 AWG**

AWG/MCM Solid Al: **300 MCM**

mm² Stranded Al: **120**

mm² Solid Al: **150**