

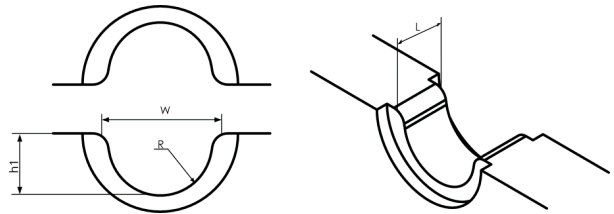
Integrated dies 1300-system

13BC8-9

Die pair for Cu branching with C-sleeves, oval crimping.

Through conductor 50-16 mm², branching 50-16 mm².

No die holders are needed. Used in the V1300 system.



Item number: **5312-440200**

EAN: **7393487002357**

R, radius (mm): **9**

L (mm): **20**

h1 (mm): **10.5**

Crimp geometries: **Oval**

Number of crimps: **1**

mm² Cu: **Total: 50-100**

mm² C-sleeve Cu Range, Min: **50-100**

mm² C-sleeve Cu Range, Max: **50-100**

Through conductor, Min (mm²): **6-50**

Through conductor, Max (mm²): **6-50**

Branching, Min (mm²): **6-50**

Branching, Max (mm²): **6-50**