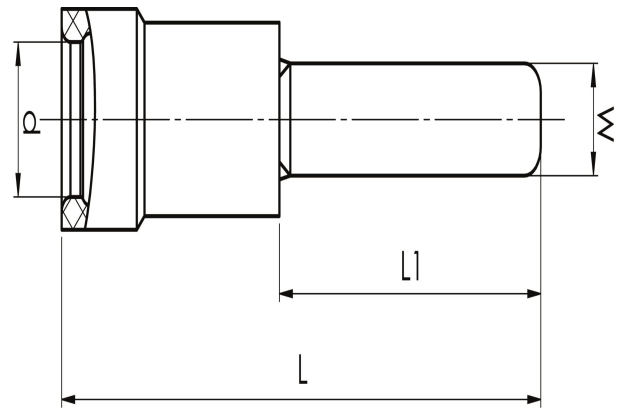


Blade terminals 0.25 - 6 mm<sup>2</sup>

# A2524SFL

- ✓ Material: Cu 99.95%, tin plated Cu/Sn, brazed neck.
- ✓ Insulation PVC, Easy-entry, without tab.

Pre-insulated blade terminal for 1.5-2.5 mm<sup>2</sup> cable.  
Used with certified tool GSA0760.



Item number: **7278-151200**  
EAN: **7393487012592**

W (mm): **2.3**  
d (mm): **4.5**  
L1 (mm): **18**  
L (mm): **27.2**  
s (mm) - strip length: **8**

Insulation material: **PVC**  
Insulation colour: **Blue (insulated terminals)**  
Material: **Cu, Cu/Sn**

AWG/MCM Cu: **16 - 14 AWG**  
mm<sup>2</sup> Cu: **1,5-2,5**