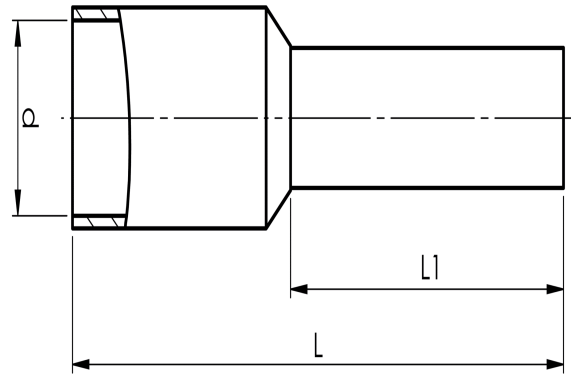


Pre-insulated end terminals 0.14 - 120 mm<sup>2</sup> ET,  
standard colour

# A1,5-18ET

- ✓ Material: Cu 99.95%, tin plated Cu/Sn, CSA approved.
- ✓ Polypropylene insulation, colour code W.

Pre-insulated end terminal ET, 1.5 mm<sup>2</sup>. Used with certified tool PEB0110T.



Item number: **7287-007500**

EAN: **7393487013124**

d (mm): **3.3**

L1 (mm): **18**

L (mm): **24**

s (mm) - strip length: **20**

Working temperature, Min (°C): **-5**

Working temperature, Max (°C): **105**

Insulation material: **PP**

Insulation colour: **Red (end sleeves)**

Material: **Cu, Cu/Sn**

Measures acc DIN46228: **Yes**

AWG/MCM Cu: **16 AWG**

mm<sup>2</sup> Cu: **1,5**