

KRFS tube terminals 50 - 400 mm² with narrow palm

KRFS95-6

- ✓ Material: Cu 99.95%, tin plated Cu/Sn.
- ✓ Inspection hole
- ✓ For stranded (class 2) and multi-stranded (class 5) Cu conductors, for multi-stranded Cu conductors contact crimping using the Dual system is recommended.
- ✓ Easy to install via cable gland, allows for pre-installation.
- ✓ The width of the palm is less than or as wide as the neck.

Example of marking KRFS: 17 (neck) Elpress logotype 70 10F (palm)

17 = Die no. 70 = mm² 10 = palm hole for M10 F = type KRF for stranded and flexible conductors.
Tube terminal with narrow palm for multi-stranded (class 5) and stranded (class 2) Cu conductors (acc. to IEC 60228), 95 mm², with an M6 hole in the palm.
Used with Elpress certified systems V600, V1300, V250.



UK
CA

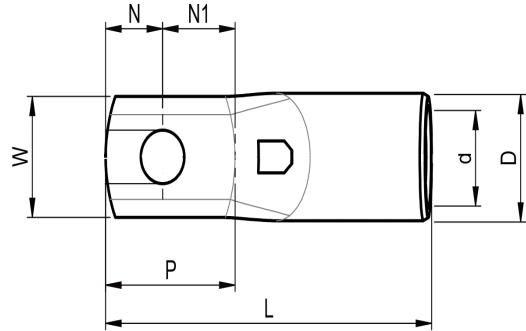
Item number: **7301-290800**

EAN: **7393487061996**

W (mm): **19**
N (mm): **11**
P (mm): **25**
f (mm): **1**
d (mm): **15**
D (mm): **20**
L (mm): **63**
t (mm) - palm thickness: **5.7**
s (mm) - strip length: **25**

Screw: **M6**
Inspection hole: **Yes**

AWG/MCM Cu: **3/0 AWG**
mm² Cu: **95**



ELPRESS