

Aluminium-copper through connectors 16 - 500  
mm<sup>2</sup>

# AKS500A- 150



Item number: **7333-443700**

EAN: **7393487090095**

s1 (mm): **30**

d (mm): **28**

D (mm): **52**

L (mm): **160.5**

d1 (mm): **19**

D1 (mm): **25**

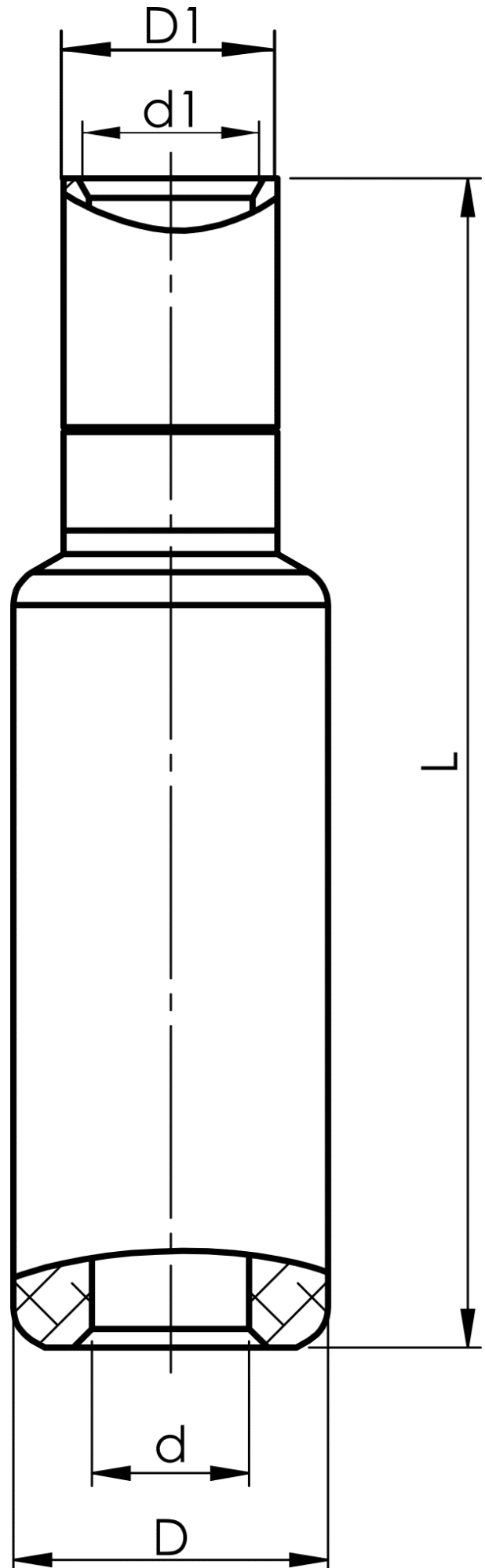
s (mm) - strip length: **110**

AWG/MCM Stranded Al: **950 MCM**

AWG/MCM Cu: **300 MCM**

mm<sup>2</sup> Stranded Al: **500**

mm<sup>2</sup> Cu: **150**



**ELPRESS**