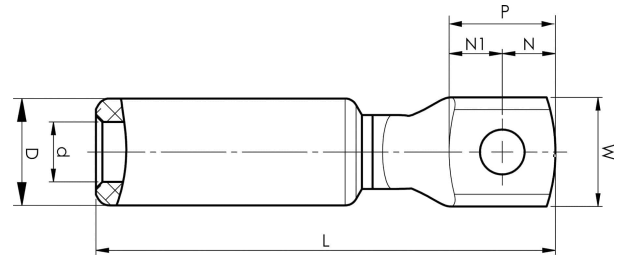


Aluminium-copper terminals 16 - 1200 mm²

AKK500A-20

- ✓ Used for connection of Al conductors for apparatus outlets and busbars of Cu.
- ✓ Two crimps are needed.



AlCu terminal for stranded Al cable 500 mm², with an M20 hole in the palm. Used with Elpress certified system V250.



Item number: **7331-399500**

EAN: **7393487020122**

W (mm): **48**

N (mm): **26**

N1 (mm): **29**

P (mm): **55**

d (mm): **28**

D (mm): **52**

L (mm): **222**

t (mm) - palm thickness: **9.5**

s (mm) - strip length: **110**

Screw: **M20**

AWG/MCM Stranded Al: **950 MCM**

mm² Stranded Al: **500**